

korea-filter.co.kr



For the
BEST QUALITY
For the
**BEST CUSTOMER
SATISFACTION**



Since 1996
KOREA FILTER



Customized Design by
**DIFFERENTIATED FILTRATION
TECHNOLOGY**

INTRODUCTION “For the Best Quality, For the Best Customer Satisfaction”

Korea Filter has studied and improved filter-related products since 1996. We always emphasize on quality and customer service to better support our customers.

As a result of this effort, we have a good business relationship with major shipping companies.

Also we have 5 patents and 2 certificates of utility model registration for our products in Korea.

Also we have applied for patents for our products in overseas countries like Japan, China, Germany and USA.

We have our own test equipment to guarantee products' performance and all products are manufactured under rigorous quality control system. Therefore our products have a good reputation in filter industry. We will continuously study and develop filter products to provide cost-effective & excellent solutions for our customers.

Thank you.



Since 1996

KOREA FILTER CO., LTD.

#50524 35 Yongdangsandan 4-gil, Yangsan-si,
Gyeongsangnam-do, Republic of Korea

Tel +82. 55. 367. 0360

Fax +82. 55. 367. 0361

E-mail webmaster@korea-filter.co.kr

Site www.korea-filter.co.kr



HISTORY

Aug 1996 Established under the name of Korea Filter

Mar 200 Utility patent registered for filtering machine for liquefied natural gas

July 2003 (Registration No. 0183345)

Certified as the qualified maintenance company

Sep 2003 (Ulsan Power Generation Headquarter of Korea East-West Power Cop.,Ltd)

Certified as the qualified maintenance company for hydro-thermal power

Jun 2004 generation pland (Samcheonpo Thermal Power Headquarther of KOSEP)

Nov 2006 ISO 9000 certified

Certified as the qualified maintenance company

(Samcheonpo Thermal Power Headquarther of KOSEP)

Mar 2007 Patent acquired for fluid Filter (Patent No. 10-0700383)

Obtained the certificate of components and materials reliability with

Nov 2008 the hydraulic filter (RS B0046) certified

Apr 2009 Filter patented easy for disassemble (Patent No. 10-0870089)

May 2009 ISO 9001 certified

May 2009 Transfer of general industrial complex

(1091-3, Yelim-ri, Jeonggwan-myeon, Gijan-gun, Busan city)

Dec 2009 Certified as the qualified. maintenance company

(Korea East-West Power Co.,Ltd)

Apr 2011 Certified as the small and medium sized business with technical innovation

May 2012 (INNO-BIZ), (No. R6024-3231)

Jun 2012 Auto-Washing Filter System (Patent Pending : 10-2010-0046952)

Jul 2012 ISO 9001-2008 certified

Jun 2014 Recognized as R&D department by Koita (No. 2012151259)

Jul 2015 Patent acquired for Pressure-Back Washing Filter Method by the Filter Drum (No. 10-1169436)

Oct 2015 Patent acquired for Back-Washing Back-Washing Filter System (No. 10-1414789)

ISO 9001 Certified (Certificate No. 720045)

Jul 2018 ISO 14001 Certified (Certificate No. 789098)

OHSAS 18001 Certified (Certificate No. 799657)

Transfer of general industrial complex

(#50524 35 Yongdangsandan 4- gil, Yangsan-si, Gyeongsangnam-do)

AUTO STRAINER *for Ballast water*

CHARACTERISTIC

- » When BWMS operates at high turbidity and pollution water condition, the solution of decreasing filtering should be cleaning element consistently
- » contain and also durability excellence
When the ship are maximum load line by cargo loading, It possible for back-washing to overboard by high pressure and quick speed water of pump
- » smoothly (For example other makers, if the position of load line is lower than sea level, back-washing water not be discharged overboard and the effect will be lowered by back pressure)
Increases the effectiveness of system and contributes to smooth operation

» Cleaning

Back washing done by pump more effective back washing because of high pressure (3 Patents: incl. No.10-1054236)

» Durability

Excellent restoration function by effective back washing

» The function of pump

Provide high pressure for effective back washing drain water out of vessels after filtering

» Turbid and polluted sea area

Good performance



AUTO STRAINER

MANUAL STRAINER

SHORT DISTANCE PIECE

DEMISTER

TEST EQUIPMENT

DELIVERY PERFORMANCE

CERTIFICATION

MAJOR CUSTOMER

AUTO STRAINER *for Sea chest water*

CHARACTERISTIC

- » Auto cleaning system enables the vessels into using ballast water even if the seawater has much foreign substance
- » When installing our system, the vessels can reduce the size of strainer and foreign substance less flows into the vessels
- » Our system minimizes the effect of foreign substance and then does not affect cooling efficiency, which leads to cost saving of maintenance



AUTO STRAINER

MANUAL STRAINER

SHORT DISTANCE PIECE

DEMISTER

TEST EQUIPMENT

DELIVERY PERFORMANCE

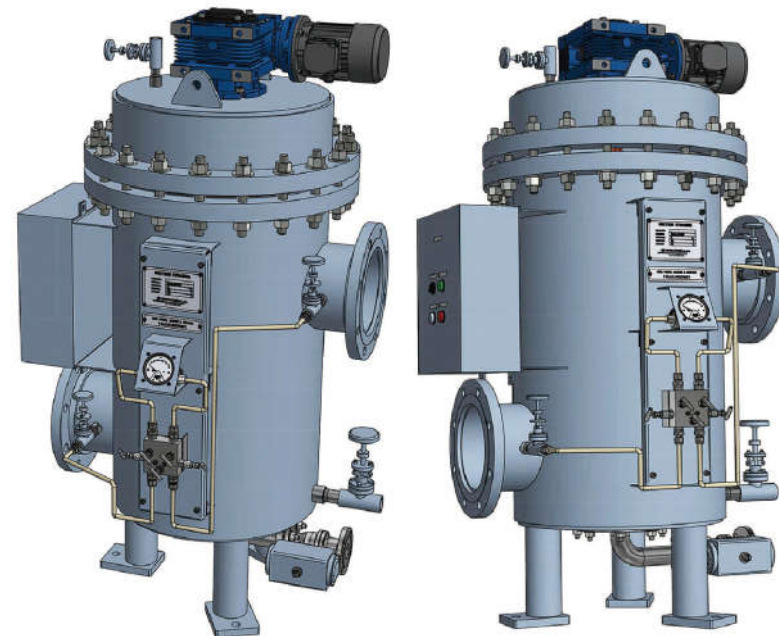
CERTIFICATION

MAJOR CUSTOMER

AUTO STRAINER *for Condensate & Boiler feed water*

CHARACTERISTIC

- » Automatic cleaning can quickly and continuously clean the contaminants entered during pump operation, thereby reducing performance degradation and improving equipment durability
- » Automatic cleaning can extend the terms of maintenance for filter cleaning and increase equipment operating efficiency



AUTO STRAINER

MANUAL STRAINER

SHORT DISTANCE PIECE

DEMISTER

TEST EQUIPMENT

DELIVERY PERFORMANCE

CERTIFICATION

MAJOR CUSTOMER

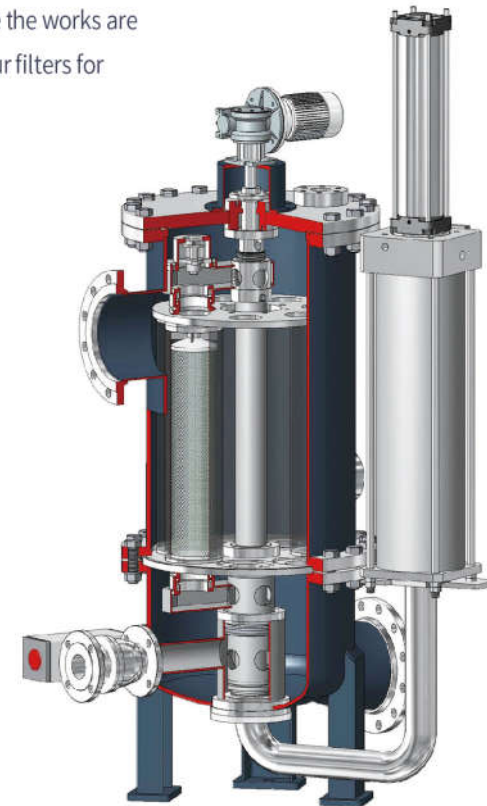
AUTO STRAINER *for Lubrication & Fuel oil*

SUMMARY

» Vessels and power plants often do some maintenance and repair works on filters and strainers because of low quality heavy oils and change of quality. It is not easy for them to settle blockage of filters and strainers because the works are done by manual cleaning. KoreaFilter has solved blockage to improve performance and has provided our filters for domestic power plants.

CHARACTERISTIC

- » Our filter improves the blockage of filters and strainers
- » The function of Auto backwashing reduces maintenance work and costs
- » More flexible in change of quality
- » Easy operating for workers



AUTO STRAINER

MANUAL STRAINER

SHORT DISTANCE PIECE

DEMISTER

TEST EQUIPMENT

DELIVERY PERFORMANCE

CERTIFICATION

MAJOR CUSTOMER

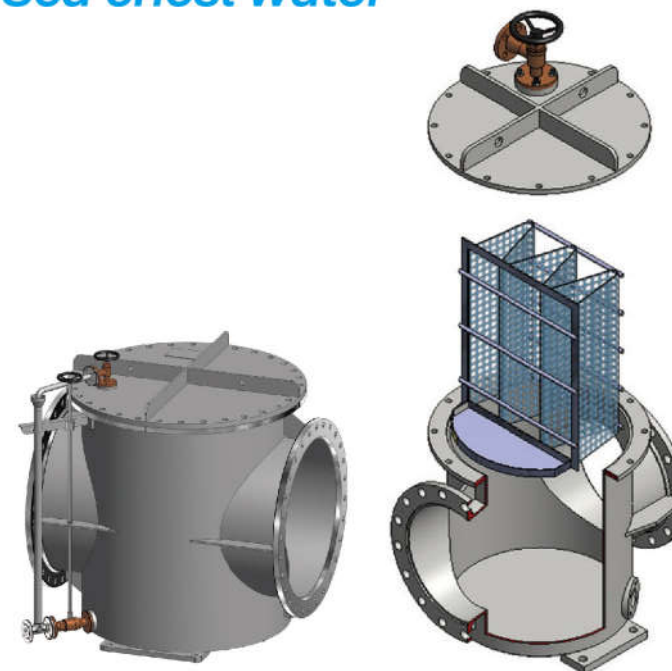
MANUAL STRAINER *for Sea chest water*

APPLICATION

- »» Hull in the main sea chest strainer (Common)
- »» Filter area of broad the proposed space, where necessary

CHARACTERISTIC

- »» Bending bar type to apply the large element area for filter area in limited space, 2 times and above filter area can be obtained generally
- Ex) If the bending 10 for strainer element with same diameter size 30mm, more filter area can be obtained than general element



AUTO STRAINER

MANUAL STRAINER

SHORT DISTANCE PIECE

DEMISTER

TEST EQUIPMENT

DELIVERY PERFORMANCE

CERTIFICATION

MAJOR CUSTOMER

MANUAL STRAINER

for Other parts of Ship

SUMMARY

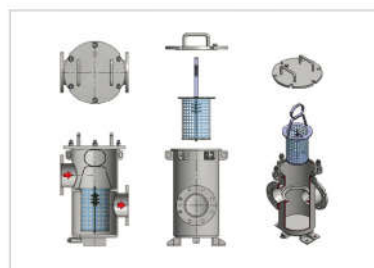
- » Normally it is based on JIS Standard
- » The designation depends on the shape and application fluid



SIMPLEX WATER STRAINER
(STEEL PLATE)



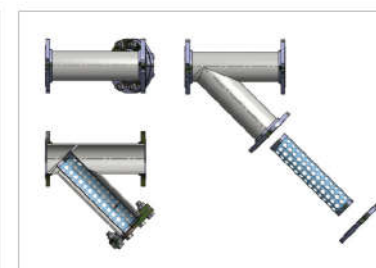
SIMPLEX WATER STRAINER
(CASTING)



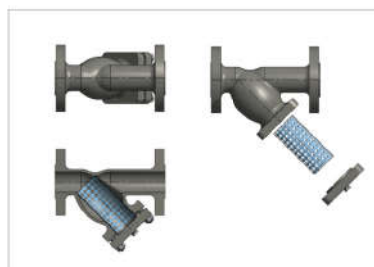
SIMPLEX OIL STRAINER
(STEEL PLATE)



SIMPLEX OIL STRAINER
(CASTING)



Y STRAINER
(STEEL PLATE)



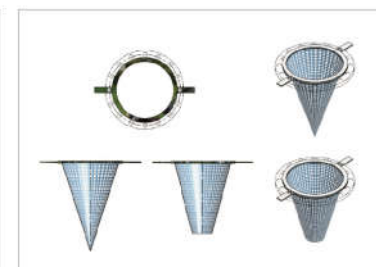
Y STRAINER
(CASTING)



MUD BOX
(STEEL PLATE)



MUD BOX
(CASTING)



TEMPORARY STRAINER

AUTO STRAINER

MANUAL STRAINER

SHORT DISTANCE PIECE

DEMISTER

TEST EQUIPMENT

DELIVERY PERFORMANCE

CERTIFICATION

MAJOR CUSTOMER

SHORT DISTANCE PIECE *for LNG Cargo line*

SUMMARY

- » Ship side pipe spool directly connected to QCDC (Quick Connect and Disconnect Couplers) for LNG Loading and Unloading
- » The roughness of the flange surface bonded to QCDC is very important (Less than 1.6Ra)



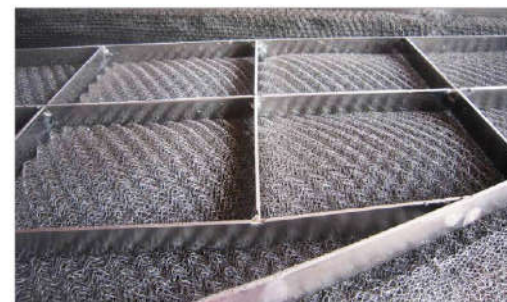
DEMISTER

SUMMARY

- Wire Dia. For metallic is 0.122-0.254mm and plastic yarn is 0.3mm, We also knit combined mesh with metallic, PP, PE, Nylon, Glass fiber, Cotton, Teflon. Style and material are selected based upon our engineering result, previous experience or sample furnished by the purchaser correct selection of the style and material are important for good performance and long life of the Demister pads.

CHARACTERISTIC

- ▶ **DE-80** : Low cost mesh pad good for high through put capacity and solid retention. Used for good separation efficiency with viscous or dirty liquids and permits higher vapor velocities. Used in 6" thickness minimum.
- ▶ **DE-144** : For general purpose and all around use and has 98-99% removal efficiency against 5-8 micron mist at 1-4 m/sec velocity. Used in 4-6 inches thickness or thicker for better efficiency.
- ▶ **DE-193** : Practical and standard style and most popularly used for heavy duty and high efficiency. Removes 98-99% at 1-3.5m/sec velocity. Thickness recommended is as same as DE-144 style.
- ▶ **DE-220** : Used for removing fine particles as much as 1-3 micron mist or wet dust. Especially good for where the entertainment is 1.0 g/m³ or less. Used in 8-10 inches thick or thicker for better efficiency.
- ▶ **DE-432** : Used for removing the fine particles mist as under 0.8-1 micron in greatness. Brings higher performance efficiency than DE-220 style. Recommended thickness is as same as the DE-220 style.



AUTO STRAINER

MANUAL STRAINER

SHORT DISTANCE PIECE

DEMISTER

TEST EQUIPMENT

DELIVERY PERFORMANCE

CERTIFICATION

MAJOR CUSTOMER

TEST EQUIPMENT *for Auto strainer*

Korea Filter has various test equipment to guarantee its products' quality and performance.

A test is conducted under possibly actual operating conditions to avoid and minimize unexpected problems. We are willing to show you a performance test wherever you like.



TEST EQUIPMENT *for Performance test by using seawater*

DISCRIPTION

- » Location Ulsan, Republic of Korea
- » Operational flow rate 500m³/hr, 750m³/hr, 1000m³/hr
- » Possible Test Equipment operation,
Operation by turbidity,
Back-washing, Control



- » Location Gaochi dock, Tongyong-si, Gyeongsangnam-do, Republic of Korea
- » Test equipment Tank (Capacity : 250ton x 3)
- » Operational flow rate 250m³/hr
- » Possible Test Equipment operation, Back-washing by turbidity,
Control, Filtering of microbe



- » Location KOREA FILTER shop
- » Test equipment Tank (Capacity : 30 ton)
- » Operational flow rate 250m³/hr
- » Possible Test Equipment operation,
Back-washing, Control test



DELIVERY PERFORMANCE

KOREA FILTER has a variety of test equipment to ensure the quality and performance of the product, and in actual operating conditions to avoid and minimize unexpected problems Perform the test. We will show you performance tests wherever you want.

» FACILITY NAME WASTE FEEDER

» SCOPE OF SUPPLY Production



» FACILITY NAME GRATE SYSTEM

» SCOPE OF SUPPLY Production



AUTO STRAINER

MANUAL STRAINER

SHORT DISTANCE PIECE

DEMISTER

TEST EQUIPMENT

DELIVERY PERFORMANCE

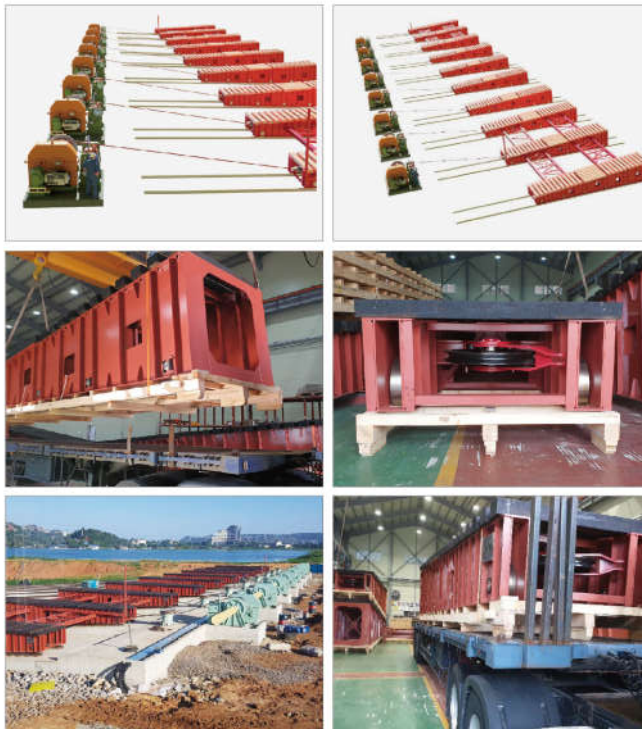
CERTIFICATION

MAJOR CUSTOMER

DELIVERY PERFORMANCE

KOREA FILTER has a variety of test equipment to ensure the quality and performance of the product, and in actual operating conditions to avoid and minimize unexpected problems Perform the test. We will show you performance tests wherever you want.

- » FACILITY NAME Tanzania SLIPWAY CART
- » SCOPE OF SUPPLY Design, Production, Installation



- » FACILITY NAME GMF TRAILER
- » SCOPE OF SUPPLY Production



AUTO STRAINER

MANUAL STRAINER

SHORT DISTANCE PIECE

DEMISTER

TEST EQUIPMENT

DELIVERY PERFORMANCE

CERTIFICATION

MAJOR CUSTOMER

CERTIFICATION



PATENTS



AUTO STRAINER

MANUAL STRAINER

SHORT DISTANCE PIECE

DEMISTER

TEST EQUIPMENT

DELIVERY PERFORMANCE

CERTIFICATION

MAJOR CUSTOMER

MAJOR CUSTOMER



Hanwha Ocean co., Ltd
www.hanwhaocean.com



EXCELERATE ENERGY L.P.
www.excelerateenergy.com



HYUNDAI HEAVY INDUSTRIES TMC
www.hhitmc.com



NYK LNG Shipmanagement (UK) Ltd.
www.nyk.com



Teekay Gas
www.teekay.com



ALPHA GAS S.A.

Alpha Gas S.A.
Alpha-gas-sa.com



SAMSUNG HEAVY INDUSTRIES

SAMSUNG HEAVY INDUSTRIES
www.samsungshi.com



Golar LNG
www.golarlng.com



HYOSUNG GOODSPRINGS
www.hsgoodsprings.com



MINERVA MARINE Inc.
www.minervamarine.com



Bernhard Schulte Shipmanagement
www.bs-shipmanagement.com



Excelerate Energy
www.excelerateenergy.com



HYUNDAI HEAVY INDUSTRIES
www.hhi.co.kr



DOOSAN HEAVY INDUSTRIES
www.doosanheavy.com



JFE Engineering Corporation
www.jfe-eng.co.jp



TMS CARDIFF GAS LTD

TMS CARDIFF GAS LTD
www.tms-cardiffgas.com



Shell International Trading and Shipping Company Limited
www.shell.com



EXMAR Ship Management
www.exmarshipmanagement.com



Wärtsilä
www.wartsila.com



KOREA EAST-WEST POWER
www.ewp.co.kr



MARAN GAS MARITIME INC.
www.marangas.com



CELSIUS GROUP
Celsiusshipping.com



CELSIUS GROUP
Celsiusshipping.com



Hapag-Lloyd AG
www.hapag-lloyd.com

ESG MANAGEMENT

KOREA FILTER choice
for a better future!

OCEAN with
ENVIRONMENTAL

OCEAN with
SOCIAL

OCEAN with
GOVERNANCE

For the
BEST QUALITY
For the
**BEST CUSTOMER
SATISFACTION**

ESG stands for Environment, Social, and Governance, meaning three key elements of corporate management to achieve sustainability that focuses on environmental management, social responsibility, and sound and transparent governance

Customized Design by
DIFFERENTIATED FILTRATION TECHNOLOGY

www.korea-filter.co.kr